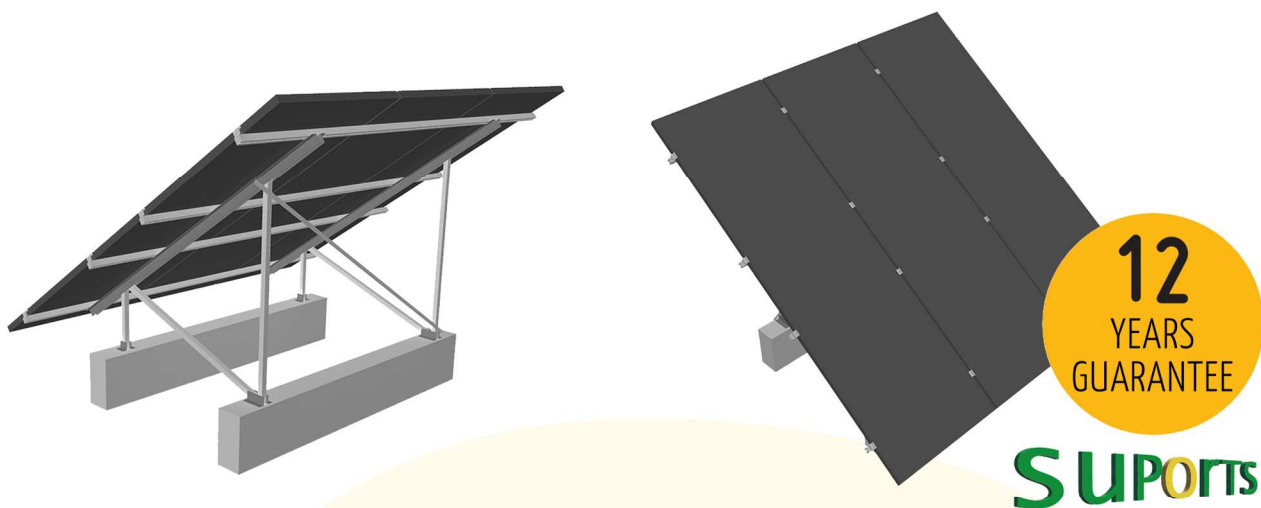
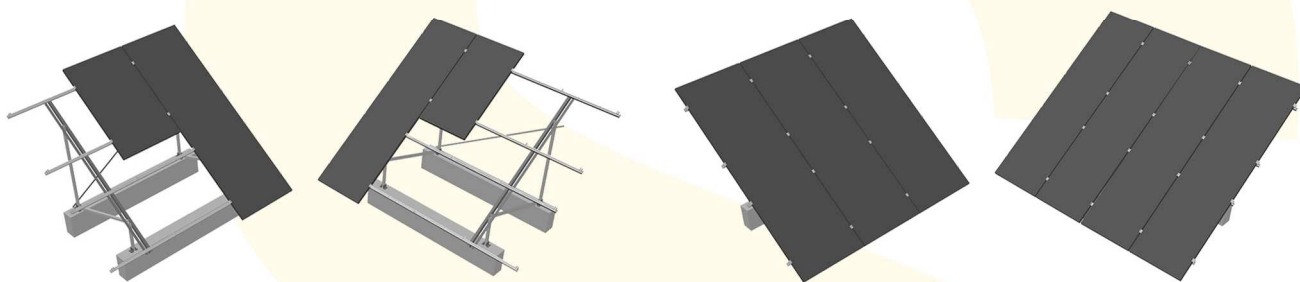


M6 - M8 MATRICES



The structural systems for the M6-M8 matrices are a simple and cost-effective solution for ground or flat-roof installation. The panels are laid out vertically on two levels. The M6-M8 matrices can be adapted to suit the structural needs of any photovoltaic installation and any panel model.

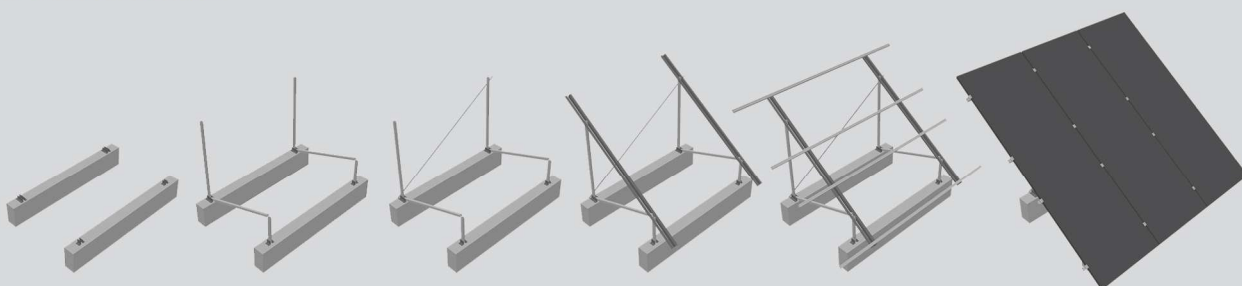
● SOLAR MOUNTING SYSTEMS






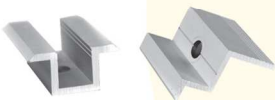

● SYSTEMS FEATURES

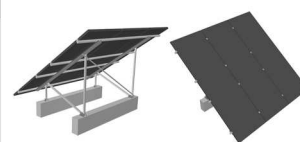
- Modular matrix for 6-8 independent panels (M6-M8).
- Single or multiple panel installation.
- Aluminium structure attachable with screws.
- Stainless steel screws and fittings included.
- Easy assembly.
- Suitable for any size panel.

● ORDER OF ASSEMBLY



M6 - M8 MATRICES

			M6	M8
ANGLE BRACKETS		Supporting Angle Bracket AT 35° 2AH	2	2
		Sloping Bar	4	4
		Back Bar	2	2
		Front Bar	2	2
		Diagonal Bar	2	2
		Back Angle Bar	4	4
		Front Angle Bar	4	4
PROFILE		Rail Profile	4 3250mm	4 3600mm
CROSS TIES		Interface without wings 2650mm	1	1
FASTENERS		Zeta Fastener	8	8
		Omega Fastener	8	12
SCREWS		SUPPORTING PIECES JOINTS		
		Hex. Socket Head Cap Screw with Tooth Pitch M8x50mm	12	12
		Hex. Flange Nut with Tooth Pitch	12	12
		Grower Washer M8	12	12
		JOINT between SUPPORTING PIECES-RAIL		
		Hex. Socket Head Cap Screw with Tooth Pitch M8x20mm	8	16
		Square Nut M8	8	16
		JOINT between FASTENER-RAIL		
		Allen Head Cap Screw with Tooth Pitch M8x20mm	16	20
		Square Nut M8	16	20
		JOINT between STRUCTURE-COUNTERWEIGHT		
		Wedge Expansion Anchor M8x75mm	12	12
		JOINT between CROSS TIES		
		T-Head Bolt M8x20mm	2	2
		Hex. Flange Nut with Tooth Pitch	2	2



APPLICATIONS

All types and sizes of PV modules,
For all kinds of buildings and roofs.

Inclinations from 35°.

Max Module Dimension:

M6 - 1675mm x 1050mm x 50mm

M8 - 1675mm x 870mm x 50mm

Ask for Others

ADVANTAGES

Longevity.
Lightness.
Resistivity.
Ease of installation.
Quick installation.
Leak tightness.
Simple solutions.
Multivalent profiles.

MATERIAL

Aluminium profiles.
Stainless steel screws.
EPDM-sealing.
Stainless steel fittings.

STANDARDS

CTE.
EN.

PROCUREMENT

Quick delivery.
Delivery to works or warehouse.
Individual, detailed plans and lists included.
After-sales service.
Technical support.

Warranty

12 years.

Example: Kit 3M6 | (3) M6 x (6) 220 w = 3,96 Kw (18x220)

Uds \ Wp	180	185	190	220	225	230	235	240	245	M6
1	1,44	1,48	1,52	1,32	1,35	1,38	1,41	1,44	1,47	1
2	2,88	2,96	3,04	2,64	2,7	2,76	2,82	2,88	2,94	2
3	4,32	4,44	4,56	3,96	4,05	4,14	4,23	4,32	4,41	3
7	10,08	10,36	10,64	9,24	9,45	9,66	9,87	10,08	10,29	7
13	18,72	19,24	19,76	18,48	18,9	19,32	19,74	20,16	20,58	14
20	28,8	29,6	30,4	27,72	28,35	28,98	29,61	30,24	30,87	21
27	38,88	39,96	41,04	35,64	36,45	37,26	38,07	38,88	39,69	27
34	48,96	50,32	51,68	44,88	45,9	46,92	47,94	48,96	49,98	34
M8	Kw	Kw	Kw	Kw	Kw	Kw	Kw	Kw	Kw	Kit Power